

**RECEIVED**  
JUL 28 1997  
DIV. OF OIL, GAS & MINING

*Incorporation date  
July 11, 1997  
Side x side 03/06/08*

NOTE: REFER TO PLATES 3-0 FOR RECLAMATION TOPOGRAPHY

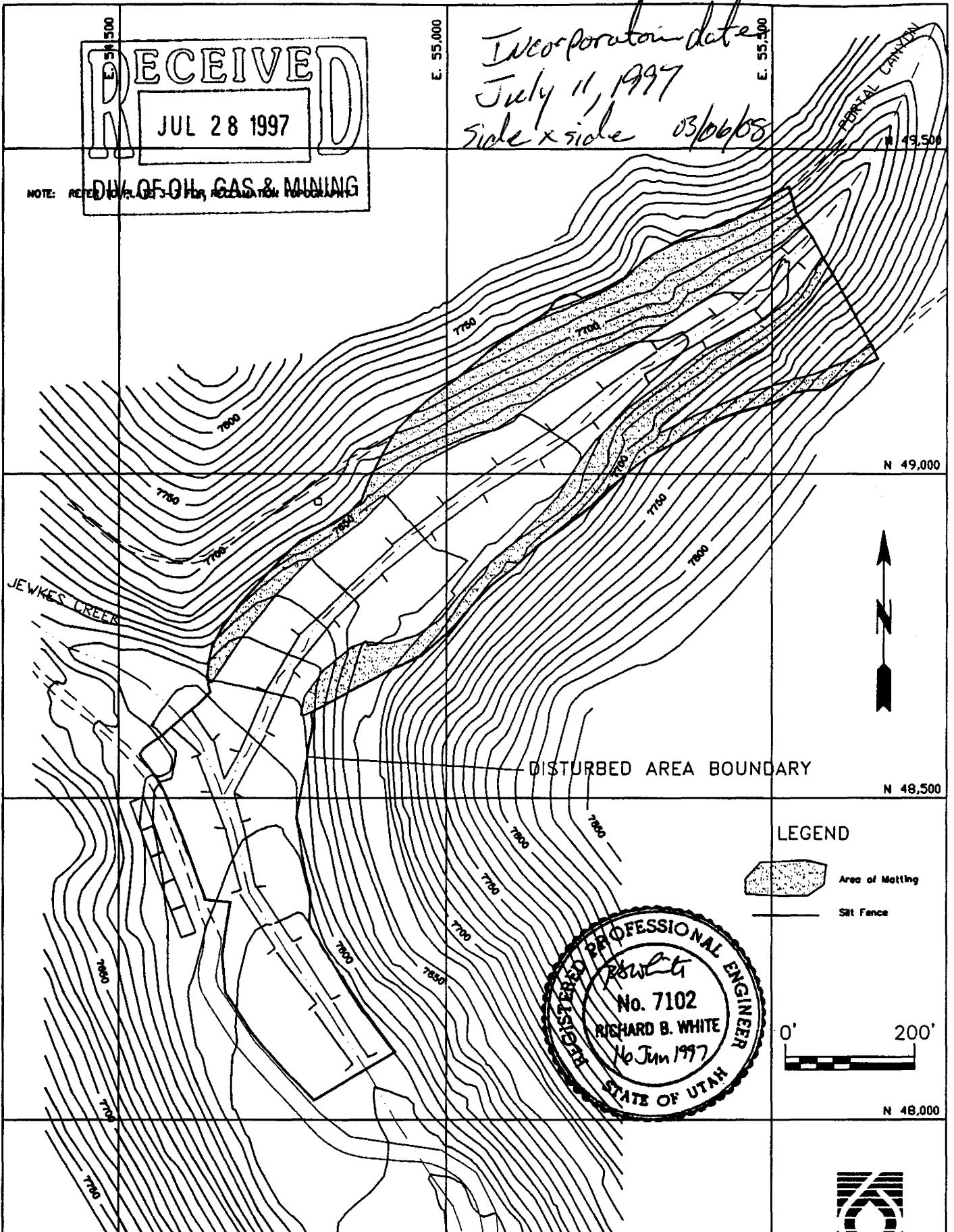


PLATE 7.7A. RECLAMATION EROSION CONTROL MEASURES.

