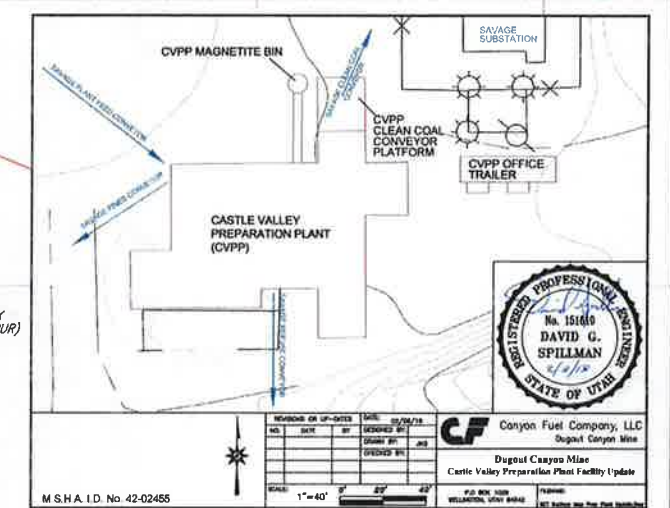


E.W. STODDARD
(RAILCO. LOADOUT)

NOTE: PERMIT AREA FOR RIVER PUMP AND PILING IS SHOWN ON PLATE 3-B.

INCORPORATED
APR 03 2018
Div. of Oil, Gas & Mining



RECEIVED
FEB 26 2018

DIV. OF OIL, GAS & MINING

LEGEND:

- PERMIT BOUNDARY/BONDED AREA
- SURFACE DRAINAGE
- FENCE
- RAILROAD
- EXISTING UNDERGROUND DRAIN
- POWER POLE

REVISIONS:

NOV. 2006	REV 1
JAN. 2007	REV 2
FEB. 2007	REV 3
JUL. 2007	REV 4
AUG. 2007	REV 5
DEC. 2007	REV 6
JUN. 2009	REV 7
MAR. 2010	REV 8
JUL. 2010	REV 9
JUN. 2011	REV 10
OCT. 2011	REV 11
AUG. 2013	REV 12
APR. 2015	REV 13

CONTOUR INTERVAL: 2'

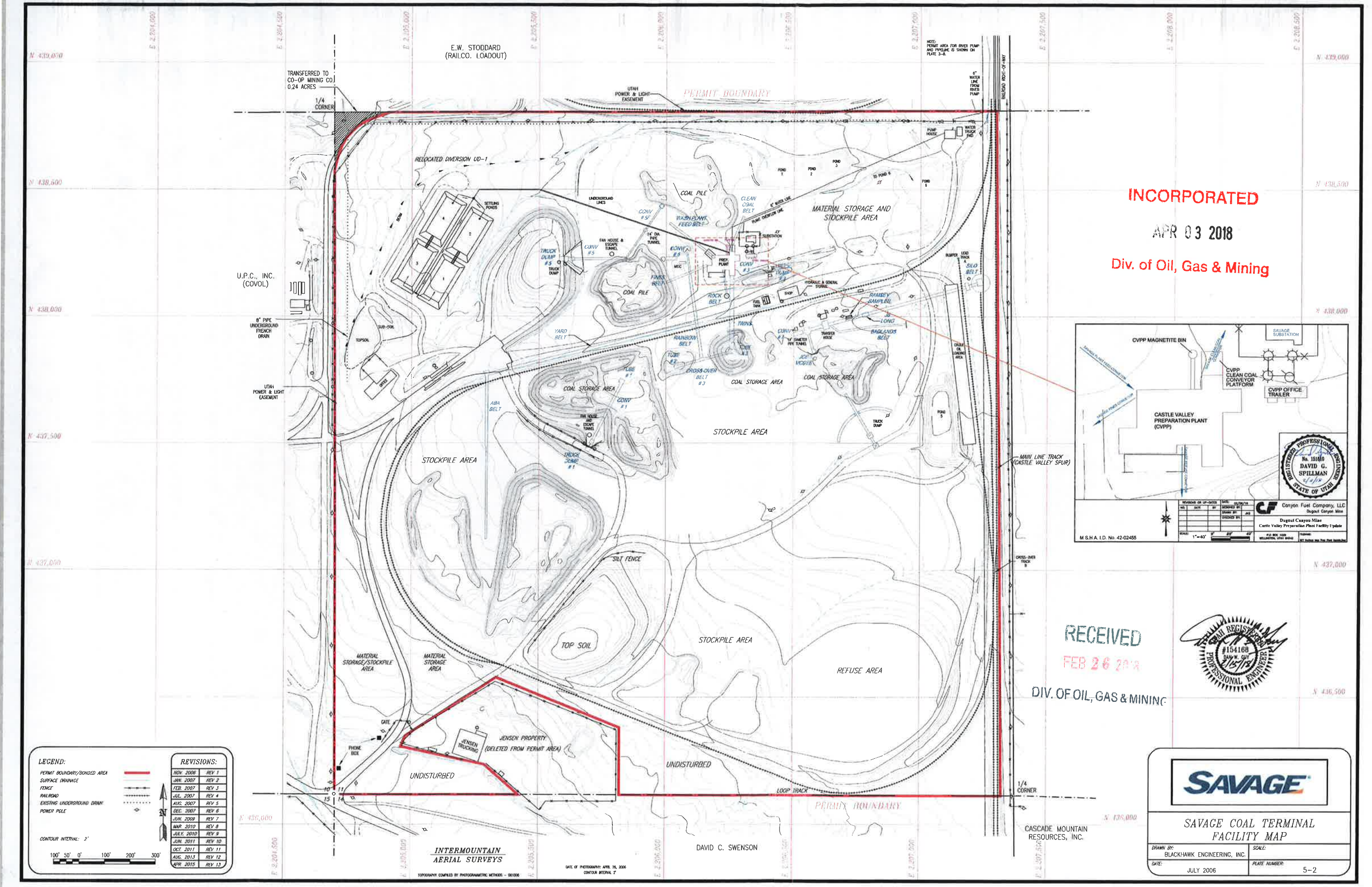
100' 50' 0' 100' 200' 300'

SAVAGE

SAVAGE COAL TERMINAL FACILITY MAP

DRAWN BY: BLACKHAWK ENGINEERING, INC. SCALE:

DATE: JULY 2006 PLATE NUMBER: 5-2



INTERMOUNTAIN
AERIAL SURVEYS

DAVID C. SWENSON

DATE OF PHOTOGRAPH: APRIL 26, 2006
CONTOUR INTERVAL: 2'

TOPOGRAPHY COMPILED BY PHOTOGRAMMETRIC METHODS - 061006