



0007/013 Incoming
K
United States Department of the Interior



BUREAU OF LAND MANAGEMENT
Utah State Office
P.O. Box 45155
Salt Lake City, UT 84145-0155
<http://www.blm.gov>

IN REPLY REFER TO:

3482
UT (923)
UTU-73516

APR 22 2010

Certified Mail – Return Receipt Requested: 7009 1410 0001 9070 3354

Mr. R. Jay Marshall
Project Manager
UtahAmerican Energy, Inc.
P.O. Box 910
East Carbon, Utah 84520

Re: Minor Modification to Resource Recovery and Protection Plan (R2P2), Revised Mining Plans with Timing, Lila Canyon Mine, Logical Mining Unit UTU-73516, UtahAmerican Energy, Inc. (UEI)

The Bureau of Land Management (BLM) received the UtahAmerican Energy March 29, 2010 submission to modify the Resource Recovery and Protection Plan (R2P2) for the subject mine. The modification revises the timing of the mining plan, including starting coal production in the second quarter of 2010. The proposed timing revision is in Federal Logical Mining Unit UTU-73516.

Proposed Plan: The modification revises the timing of the R2P2 mine plan and shows coal production will start-up in the second quarter of 2010. No other mine plan changes are indicated; therefore the recoverable coal tonnage remains the same.

Approval: The BLM has reviewed the revised R2P2 and approves the revised coal production timing for the Lila Canyon Mine, Logical Mining Unit UTU-73516.

Maximum Economic Recovery (MER): The extraction of the Federal coal following this plan will achieve MER.

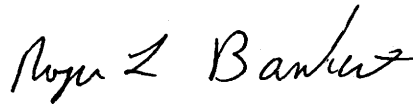
National Environmental Policy Act (NEPA): As mining will occur in the same areas that were previously approved for mining, no new surface disturbance is predicted and is therefore Categorical Excluded (CX) from NEPA analysis under DM 516 chapter 11.5, paragraph F. (8): Approval of minor modifications to, or minor variances from, activities described in an approved underground or surface mine plan for leasable minerals.

RECEIVED

APR 26 2010

DIV. OF OIL, GAS & MINING

This R2P2 modification complies with the Mineral Leasing Act of 1920, as amended, the regulations at 43 CFR 3480, and the lease terms and conditions. If you have any questions, please contact Steve Rigby at the Price Field Office at (435) 636-3604 or Jeff McKenzie of my staff at (801) 539-4038.

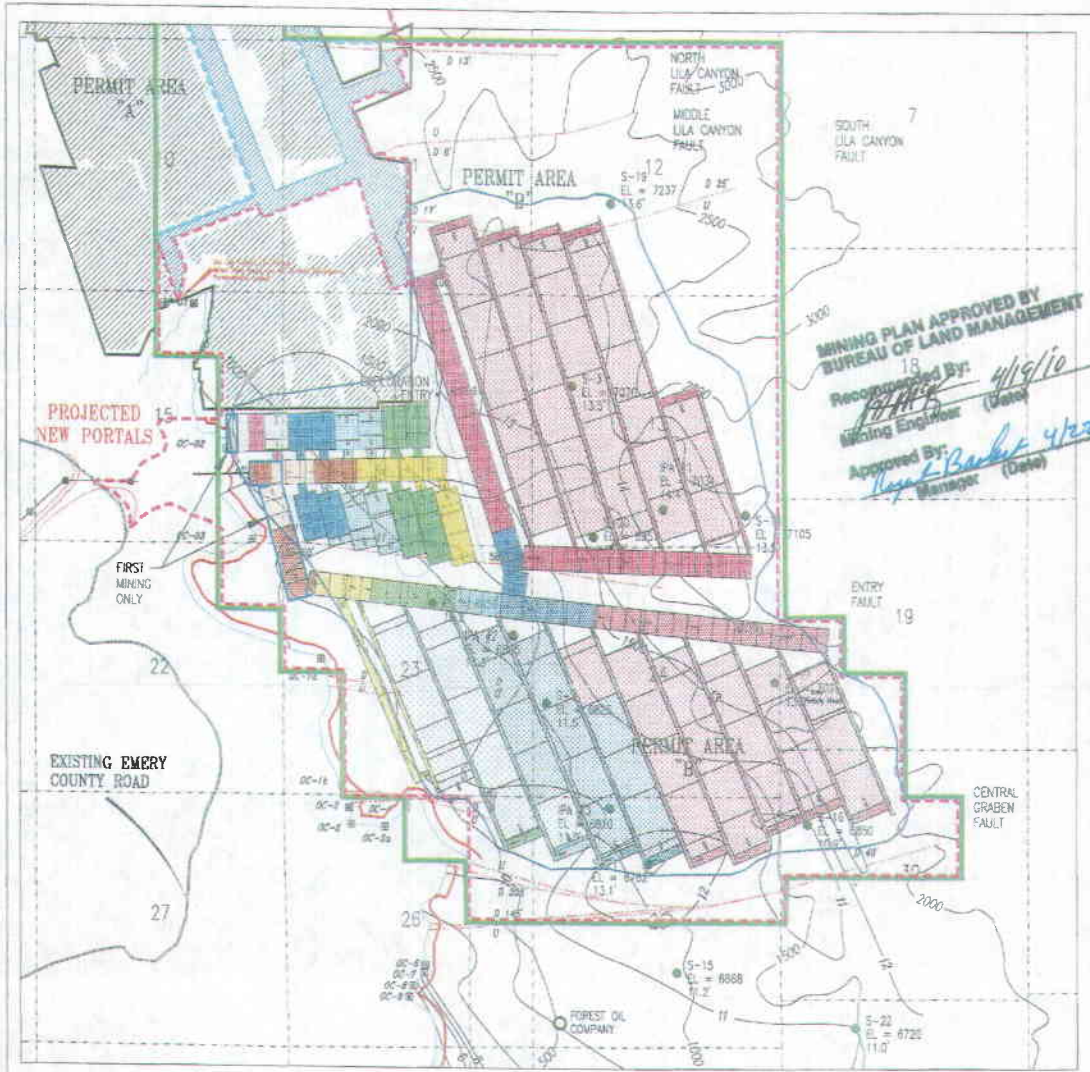


Roger L. Bankert
Chief, Branch of Minerals

Enclosure: Approved Mine Map

cc: PFO

✓ Utah Division of Oil, Gas, and Mining (Attn. Daron Haddock)
1594 West North Temple, Suite 1210, Box 145801, Salt Lake City, UT 84114-5801
Files - UTU-73516
Chron File



**MINING PLAN APPROVED BY
BUREAU OF LAND MANAGEMENT**

Recommended By: *[Signature]* 4/19/10
Mining Engineer (Date)

Approved By: *[Signature]* 4/22/10
Manager (Date)

LEGEND

PERMIT AREA OF GAS COMPANY

EXISTING EMERY COUNTY ROAD

PROJECTED NEW PORTALS

FIRST MINING ONLY

FOREST OIL COMPANY

QUARTERS LOCATIONS

1st Quarter 2010

2nd Quarter 2010

3rd Quarter 2010

4th Quarter 2010

2011

2012

2013

2014

2015-2016

2017-2018

REVISION DATE:

NO.	DATE	BY	DESCRIPTION
1	APRIL 22, 2010	RAM	NEW 7/6, 1000
2	AUGUST 10, 2010	SI	
3	SEPTEMBER 14, 2010	SI	
4	SEPTEMBER 26, 2010	SI	
5	OCTOBER 12, 2010	SI	
6	OCTOBER 19, 2010	RAM	
7	OCTOBER 21, 2010	RAM	



LILA CANYON MINE

Mine Map

SCALE: 1" = 1000'

DATE: 4/22/10

BY: [Signature]